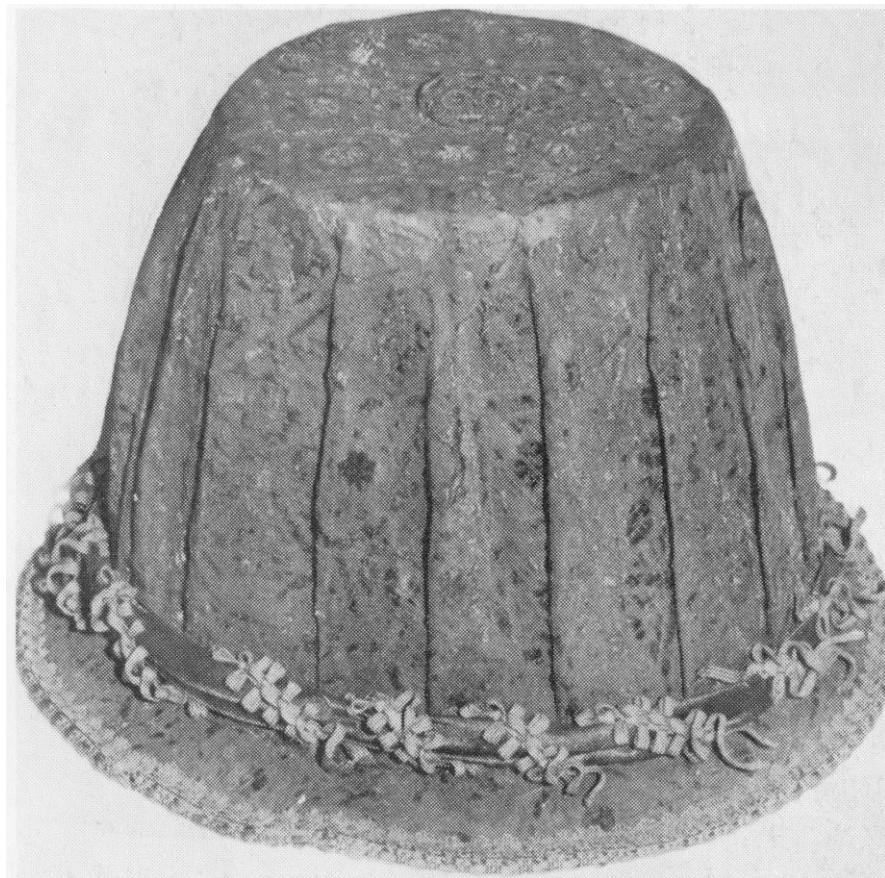


Making a Short Tipped Pleated English Hat



The Short Tipped Pleated Hat
Presented by Lady Aurelia d'Ouessant

For additional handouts please feel free to visit my website
thehoodedhare.com/research and I'm always available via email aurelia@thehoodedhare.com



Styles of Hats

Hats come in a variety of shapes and styles. Note the hat worn by Queen Elizabeth in the picture above. This hat is pleated with a flat tip. It is worn in a "perching" style as was common for women in the late 16th C.

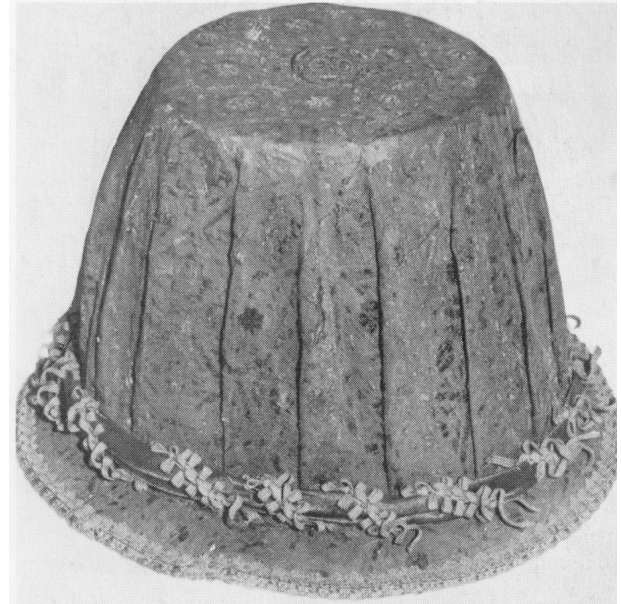
The short crown pleated hat as seen at the Museum of London:

Arnold briefly discusses this hat in her book, *Patterns of Fashion*. She comments that this hat has a hard foundation and that it is covered in black silk.

Additionally, this hat has had some updating with the hatband and gimp around the brim.

It has a 6-gauge spring metal hoop at the tip. According to Oriole Cullen, Curator of Dress & Decorative Arts Museum of London, this too is thought to be a later addition. The cover fabric and foundation seem to be original.

Upon closer inspection, this particular hat tip can be seen to be made of formed felt with heavy glue sizing. It is unclear if the hat was made over a block or if the tip and stock were originally separate pieces as time has felted the whole area. Without significant invasive analysis, it is hard to tell.



The brim on this hat is heavily sized linen. The sizing is made from animal glue. What's left of the lining is a pale blue/grey silk through which one can see the felt form on which the hat is made. There are silk threads still attached to the button thread on the top, which seems to indicate that the button originally held the lining to the top of the hat.

The really interesting thing about this hat is the use of mixed medium in the underlying construction. When one reads about hat construction, one thinks that hat foundations would be made from the same materials but as I've discovered, that's just not true.

The pattern

1. Measure your head 2 inches above your ear and add 1/2 inch. This will be your head plate size
 - a. In order to get a good head plate shape, you might find it useful to invest in an "architect curve". It lets you measure around odd shapes and retains the shape so you can trace it. This allows you to have an exact head plate. If you don't have a curve, feel free to use the plates at the end of this paper.
2. Cut the stock of your hat to this size using a slight arc making sure to mark the center front and center back of buckram.

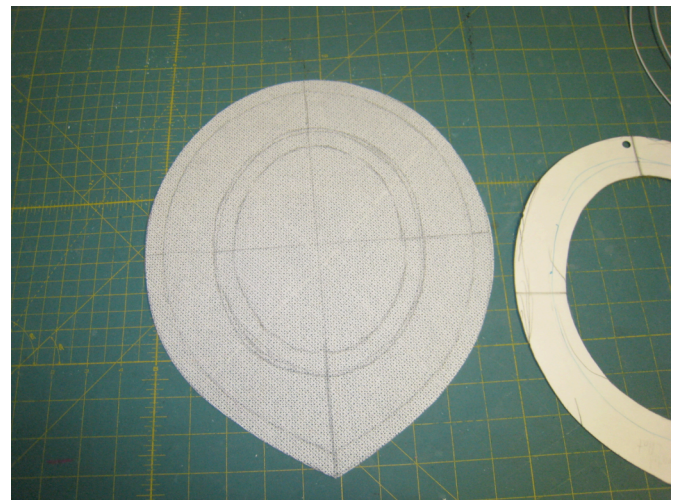




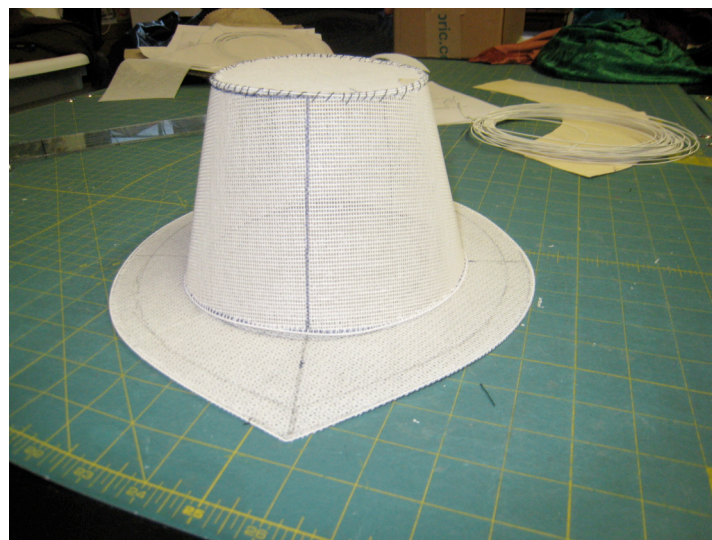
3. Sew up the back of the buckram
4. Wire around the top and bottom
5. Cut a round tip for your hat.
6. Wire around the tip
7. Sew tip to stock using whip stitches
8. Add French fleece or padding to the stock and tip using stab stitches

The brim

9. Add 1/2 inch in from your head plate; this will be where you cut the buckram for the brim.
 - a. The extra 1/2-inch will be used as tabs inside the hat where you will join the stock and the brim.
10. Add 2-2.5 inches from the actual headplate line, this will be the brim of your hat. If you want a point in the front, simply add it at this time.
11. Using the above pattern cut 2 brims from 2-ply buckram, one on the bias and one with the grain making sure to mark the center back and center front as well as the center sides. (Pencil works well for this)
12. Add millinery wire to the edge of the 2 pieces of buckram.



At this point, you have your foundation of your hat completed.



Adding fabric to brim

13. Add 1/4 inch to your brim pattern and use it to cut out 2 pieces of your fashion fabric
14. Place fabric on brim, pin securely
15. Turn each edge and sew using invisible stitches or finish with gimp

16. Using chalk or a marking pencil, marks your



head plate -1/2 inch on the brim.

17. Cut the head along the inside line
18. Cut easing tabs out to the original headplate line
19. Fold tabs up

Adding fabric to the stock

20. Cut a circle that covers our tip and stock – I like to use a large protractor for this task.
21. Place the center of the circle on the center of your tip
22. Pin fabric to the center front, back, and sides.
23. Begin quarter pinning until pleats are located along stock edge



24. Fold fabric around the bottom edge of stock and secure using a running stitch.

Adding the stock to the brim

25. Attach the stock to the brim using stab stitches.

Finishing your hat with lining.

1. Use your stock and tip pattern. Cut lining and sew together.
2. Place inside the hat and attach at the brim using a running stitch through the brim and stock – this helps secure all elements together.
3. Add petersham as a hatband.



You have your very own
Elizabethan hat



Making a Short Tipped Pleated Hat by Lady Aurelia d'Ouessant

Bibliography:

Amphlett, Hilda. "Hats: A History of Fashion in Headware". Dover Publications: New York, 2003

Arnold, Janet: Queen Elizabeth's Wardrobe Unlock'd, W S Maney and Son Ltd, Leeds 1988.
ISBN 0-901286-20-6

Arnold, Janet: Patterns of Fashion: the cut and construction of clothes for men and women 1560-1620, Macmillan 1985. Revised edition 1986. (ISBN 0-89676-083-9)

Ashelford, Jane: The Art of Dress: Clothing and Society 1500-1914, Abrams, 1996. ISBN 0-8109-6317-5

Ashelford, Jane. The Visual History of Costume: The Sixteenth Century. 1983 edition (ISBN 0-89676-076-6), 1994 reprint (ISBN 0-7134-6828-9).

Cumming, Valerie. Exploring Costume History 1500-1900. London: Batsford, 1981.

Digby, George Wingfield. Elizabethan Embroidery. New York: Thomas Yoseloff, 1964.
Dreheer, Denise. "From the Neck Up An Illustrated Guide to Hatmaking" Madhatter press:
Minneapolis, 1981

Ginsburg, Madeleine. The Hat: Trends and Traditions. New York: Studio Editions, 1990

Hearn, Karen, ed. Dynasties: Painting in Tudor and Jacobean England 1530-1630. New York: Rizzoli, 1995. ISBN 0-8478-1940-X.

Kliot, Jules and Kaethe. Millinery Feathers, Fruits and Flowers. Lacis: Berkeley CA, 2000

Nunn, Joan. Fashion in Costume, 1200-2000. 2nd edition. A & C Black (Publishers) Ltd; Chicago: New Amsterdam Books, 2000.

Starkey, David. *Elizabeth The Exhibition at the National Maritime Museum*. Chlotto&Windus. 2005