

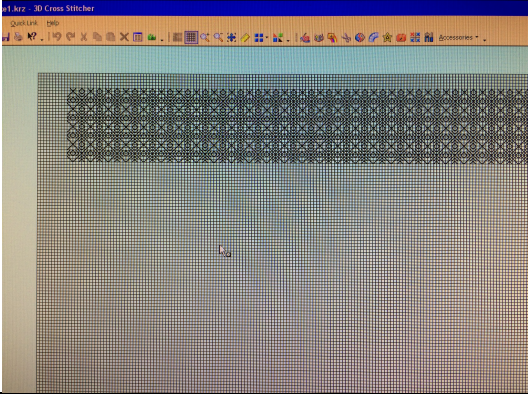




Making a Sixteenth Century Style Smocked Neck Partlet with Modern Tools.

Tools


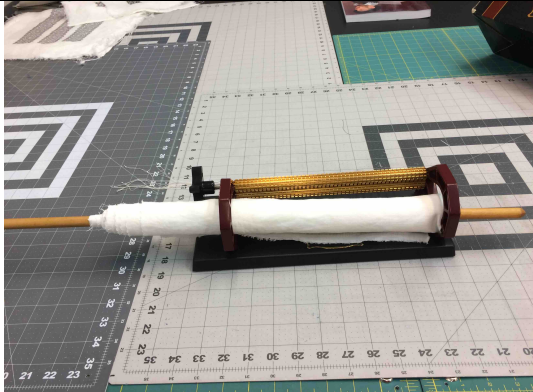
Super Amanda Smocking Pleater	
Baby Lock embroidery machine or any embroidery machine.	
Digitizing software to digitize cross stitch patterns Digitize your design, I like the extant designs in "German Modelbücher 1524-1556" Marion McNealy Make sure your embroidery design is wide enough to fit the neck. I suggest 2" – 3".	
Basic sewing machine	
Overlock stitch machine	

2 yards hankie weight linen, pre-washed	
Cut 2 pieces of fabric 18" high by 60" wide	
Cut off section for shoulder seam, 5" X4" You will be using the 5" sticking up along the length of the fabric to smock,	

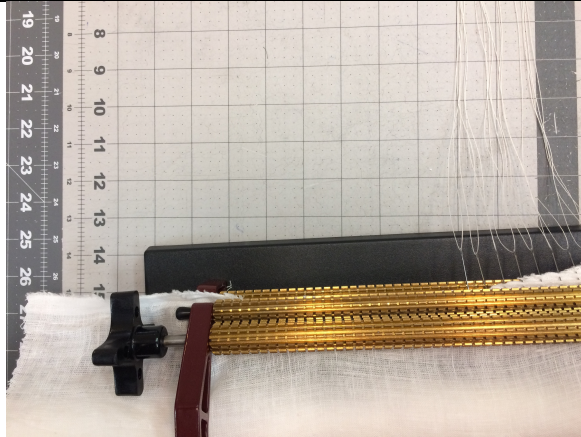
the short section 5X4 will be the shoulder seam and neck seam. This will be sewn AFTER the smocking.	
Hem top edge with either a rolled hem or a small narrow hem.	

Set up your smocker –

- I like to use heavy weight thread so there is less thread breakage
- Use 4-5 needles at full width make sure to start your needles in the 3-4th slots so there is room for the ruffle
- Thread needles, tie off end with knots

Roll fabric onto dowel, I like to use a bit of tape to hold the fabric so it doesn't slip.	
Once fabric is rolled, insert the dowel with fabric into the holes at the side of the smocker. Note that there will be fabric which will not be going through the pleater, it will just feed along on the far side from where you are threading.	

Begin feeding fabric through.
Keep going until it's all fed
through.

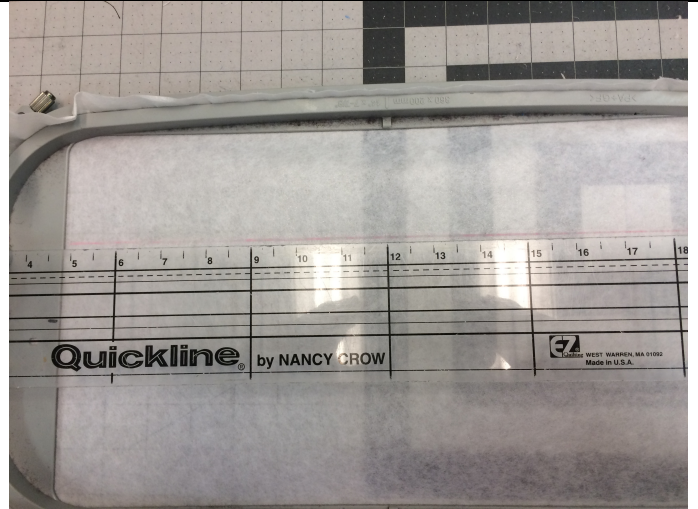


Once you are all fed through
move fabric away from the
needles and cut threads, tie off
with knots. Once smocking is
completed, its time to sew the
neck and shoulder seams
together. Push the fabric along
the threads until you have a flat
piece to work with, sew it
together.



Once smocking is completed,
its time to sew the neck and
shoulder seams together. Push
the fabric along the threads
until you have a flat piece to
work with, sew it together.

Put your smocked fabric on your embroidery hoop. I like to use sticky backed stabilizer wash away stabilizer from Floriani. draw a straight line and line up the top of the ruffle with the line.



Begin stitching. Depending on your neck size and hoop size, you may need to do 2 hooping. I'd suggest doing it such that your design connects in the center back so if there is any thick join area, its not as visible. Measure and plan!

And we have a partlet!



